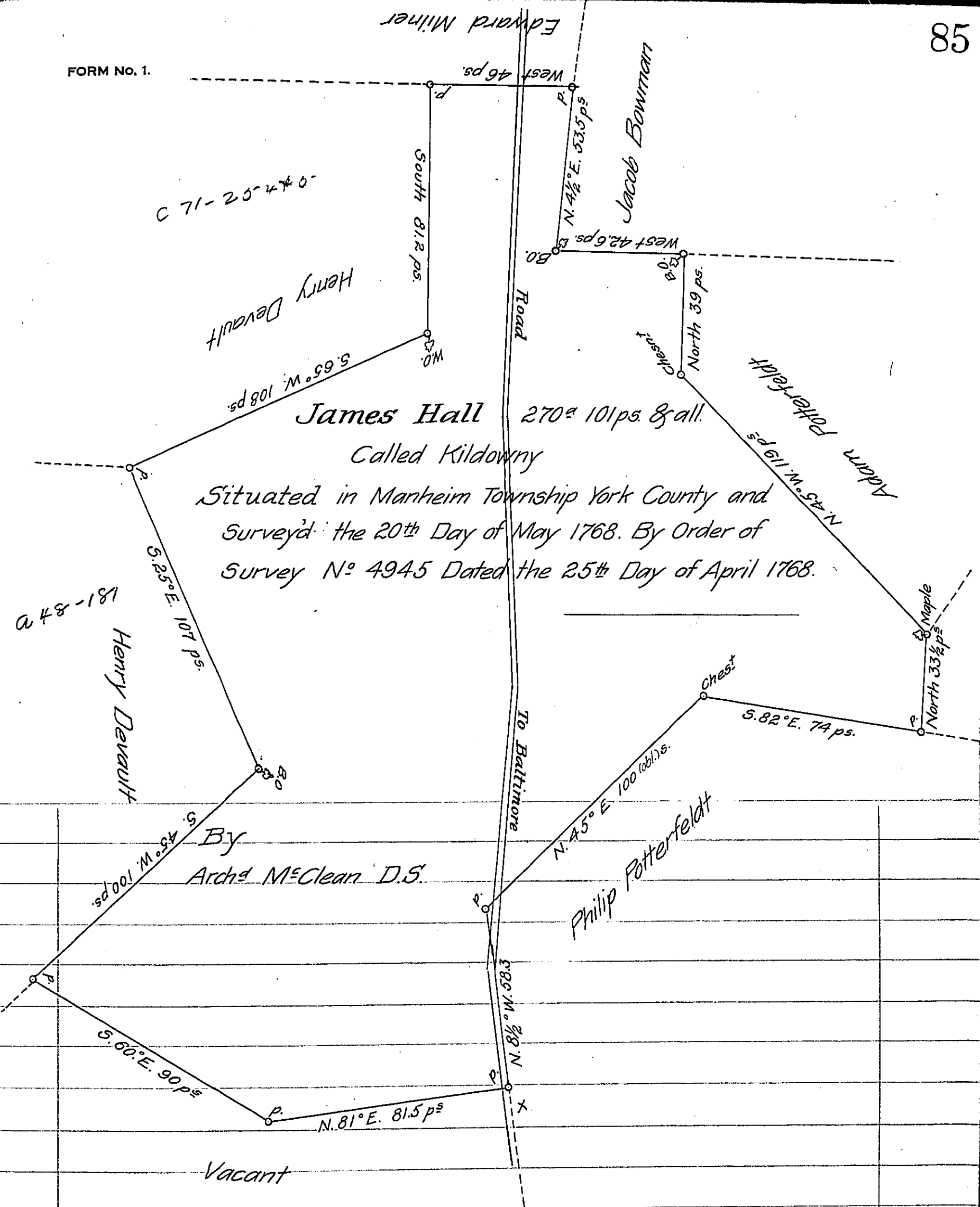


FORM No. 1.



James Hall 270± 101 ps. & all.
 Called Kildowny
 Situated in Manheim Township York County and
 Surveyd the 20th Day of May 1768. By Order of
 Survey N^o 4945 Dated the 25th Day of April 1768.

To John Lukens Esq^r }
 Surveyor General. }

IN TESTIMONY that the above is a copy of the original remaining on file in the Department of Internal Affairs of Pennsylvania, made conformably to an Act of Assembly approved the 16th day of February 1833, I have hereunto set my hand and caused the Seal of said Department to be affixed at Harrisburg, this twenty eighth day of December 1906.

Richard Brown
 Secretary of Internal Affairs.